

**SMZ****ZANZIBAR EXAMINATIONS COUNCIL****FORM THREE ENTRANCE EXAMINATION****065****TEXTILE AND DRESS MAKING****TIME: 2.30 HOURS****TUESDAY 05<sup>th</sup> DECEMBER, 2017 p.m****INSTRUCTIONS TO CANDIDATES**

1. This paper consists of **THREE (3)** sections A, B and C.
2. Answer **ALL** questions in section A and B; and **ONE (1)** question from section C.
3. Write your Examination number on each page.
4. Write your answers in the space provided.
5. Cellular phones are not allowed in the examination room.
6. Use a blue or black pen in writing. The diagrams must be drawn in a pencil.

<b>FOR EXAMINER'S USE ONLY</b>		
<b>QUESTION NUMBER</b>	<b>MARKS</b>	<b>SIGNATURE</b>
<b>1.</b>		
<b>2.</b>		
<b>3.</b>		
<b>4.</b>		
<b>5.</b>		
<b>6.</b>		
<b>7.</b>		
<b>8.</b>		
<b>9.</b>		
<b>10.</b>		
<b>TOTAL</b>		

**This paper consists of 11 printed pages**

**SECTION A: (20 Marks)****Answer ALL questions this section**

1. For each of the following items, choose the correct answer and write its letter in the box provided.
- i) Which one of the following characteristics is unique to natural fibers?
- A: Dry quickly
- B: They are soft
- C: Build up static electricity
- D: Absorb moisture and are comfortable to wear
- ii) The term **grading** means to
- A: Clip through the various layers of the seam allowance
- B: Trim the seam allowance out
- C: Straighten the fabric
- D: Trim each layer of the seam allowance to a different width
- iii) How should a sewing machine needle be placed in a machine?
- A: Flat side of shank towards the front
- B: Flat side of shank to the right
- C: Flat side of shank towards the back
- D: Flat side of shank diagonal to the right
- iv) When taking a back waist length measurement, the tape measure should be placed
- A: From the top of the shoulder to the waist
- B: From the waist to the desired finished garment length
- C: From the prominent bone at the back of the neck to the waist
- D: From the arm hole to the waist

- v) When pinning the pattern to the fabric, pattern pieces should ☐
- A: All be placed on the fabric before pinning any of them in place
- B: Be placed on the fabric and pinned one at a time
- C: Be pinned and cut out one at a time
- D: Be pinned both on top and under the fabric
- vi) The Lengthwise grain of the fabric ☐
- A: Runs from cut edge to cut edge
- B: Runs from selvedge to cut edge
- C: Forms a 45 degree angle with the selvedge edge
- D: Runs from cut edge to selvedge edge
- vii) The size of stitches used for seam should be ☐
- A: Both long and short size      B: Long
- C: Short      D: The same size
- viii) The general rule for pressing is to press ☐
- A: Each piece immediately after stitching
- B: When the garment is finished
- C: Only if the garment is rumpled
- D: After several steps have been completed
- ix) The purpose of stay stitching is to prevent ☐
- A: Wearing and tearing while sewing
- B: Facing from showing on the right side of the garment
- C: Traveling while the garment is being made
- D: Stretching while the garment is being made

x) Which of the following areas of a garment has no ease?

A: Side Seam

B: Waist seam

C: Underarm portion of the arm hole seam

D: Pocket Opening



2. For each of the following statements, write **TRUE** if statement is correct or **FALSE** if statement is not correct.

i) A good tape measure should be labeled in centimeters only \_\_\_\_\_

ii) Cutting of pattern on a material is done on fold \_\_\_\_\_

iii) There is only one type of scissors for cutting fabrics \_\_\_\_\_

iv) Bust dart is held from the waist line to the highest point \_\_\_\_\_

v) Linen is fiber produced from chemicals \_\_\_\_\_

vi) Patterns can be adjusted from size to size \_\_\_\_\_

vii) Cotton fabrics are comfortable to wear in sports \_\_\_\_\_

viii) One of the ways of maintaining a sewing machine is by washing it with water \_\_\_\_\_

ix) Button holes are usually located on the left front opening for men's clothing \_\_\_\_\_

x) Stay stitching is used to stabilize edges that might be stretched out of shape during the construction process \_\_\_\_\_

## SECTION B: (60 MARKS)

**Answer ALL questions in this section**

3. a) What is a pattern envelop?

---

---

---

---

---

b) Mention four (4) information that may be found on the Pattern Envelop.

i) \_\_\_\_\_

ii) \_\_\_\_\_

iii) \_\_\_\_\_

iv) \_\_\_\_\_

c) Describe how to use three (3) marking equipment for transferring pattern symbols to fabric.

i) \_\_\_\_\_

\_\_\_\_\_

ii) \_\_\_\_\_

\_\_\_\_\_

iii) \_\_\_\_\_

\_\_\_\_\_

4. a) Define the term "fabric".

\_\_\_\_\_

\_\_\_\_\_

b) State three (3) properties of a nylon fiber.

i) \_\_\_\_\_

ii) \_\_\_\_\_

iii) \_\_\_\_\_

- c) With the aid of a diagram, indicate the position of the three (3) grain directions of a fabric and the selvedge edge.

5. a) Describe a sewing room and its features.

---

---

---

---

---

---

- b) What is the function of the following parts of a sewing machine?

- i) Spool pin \_\_\_\_\_
- ii) Thread guide \_\_\_\_\_
- iii) Balanced wheel \_\_\_\_\_
- iv) Presser foot \_\_\_\_\_

c) Mention three (3) steps or measures to avoid accident in the sewing workshop.

i) \_\_\_\_\_

ii) \_\_\_\_\_

iii) \_\_\_\_\_

6. a) What are pattern symbols?

---

---

---

---

---

b) Differentiate between cutting lines and stitching lines.

---

---

---

---

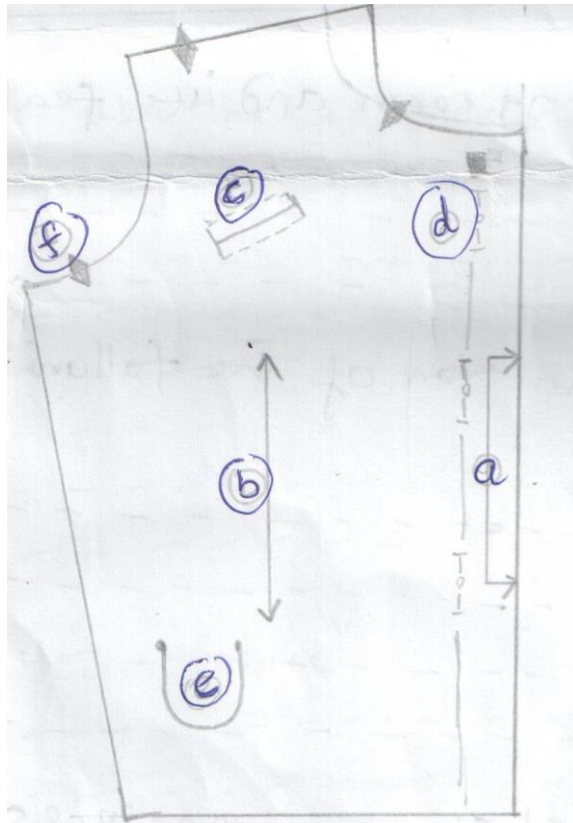
---

---

---

---

- c) Using the diagram below, identify the six (6) pattern symbols indicated by the letters (a to f).



### SECTION C: (20 Marks)

**Answer only ONE (1) question from this section.**

7. Body measurements are essential in garment making. Write an essay under the following guidelines:
- Five (5) points to be observed when taking body measurements
  - Five (5) procedures when taking measurements in making a blouse or a shirt





Candidate's Examination Number \_\_\_\_\_

This image shows a blank sheet of white paper with horizontal ruling lines. The lines are evenly spaced and run across the width of the page. There are no margins, text, or other markings on the paper.

-----