

Candidate's Examination Number _____

SMZ

ZANZIBAR EXAMINATIONS COUNCIL

FORM THREE ENTRANCE EXAMINATION

031

GEOGRAPHY

TIME: 2.30 HOURS

TUESDAY 10TH DECEMBER, 2019 A.M

INSTRUCTIONS TO CANDIDATES

1. This paper consists of **THREE (3)** sections A, B and C.
2. Answer **ALL** questions in section A and B; and **ANY THREE (3)** questions in section C.
3. Write your Examination Number on each page.
4. Write all answers in the space provided.
5. Use a blue or black pen in writing. The diagrams must be drawn in pencil.
6. Cellular phones are not allowed in the examination room.

FOR EXAMINER'S USE ONLY		
QUESTION NUMBER	MARKS	SIGNATURE
1.		
2.		
3.		
4.		
5.		
6.		
7.		
8.		
9.		
10.		
11.		
12.		
TOTAL		

This paper consists of 15 printed pages

SECTION A: (50 Marks)

PHYSICAL AND MATHEMATICAL GEOGRAPHY

Answer ALL questions in this section.

1. Choose the correct answer from the given alternatives by writing its letter in the table below.
 - i. Two major elements that determine climate of a place are
 - A. Temperature and pressure
 - B. Temperature and rainfall
 - C. Wind and pressure
 - D. Wind and rainfall
 - ii. During the night the sea temperature is higher than the land because
 - A. The sea loses the heat faster than the land
 - B. The sea gains the heat faster than the land
 - C. The land loses heat faster than the sea
 - D. The land breeze increases the sea temperature
 - iii. Maldives islands are located in the
 - A. Atlantic ocean
 - B. Arctic ocean
 - C. Indian ocean
 - D. Pacific ocean
 - iv. Most of the solar system bodies can be observed by the instrument called
 - A. Microscope
 - B. Radiosonde
 - C. Telegram
 - D. Telescope
 - v. The word "Geography" was originated from
 - A. English words
 - B. Greek words
 - C. Spanish words
 - D. Turkish words

- vi. The long and fairly narrow raised part of the ocean floor is called
 - A. Ocean ridge
 - B. Continental slope
 - C. Continental shelf
 - D. Ocean trenches

- vii. Basically weather is the condition of the atmosphere of a place at a particular time in
 - A. Day to day
 - B. Decade to decade
 - C. Year to year
 - D. Century to century

- viii. The third largest lake in the world is
 - A. The Lake Baikal
 - B. The Lake Superior
 - C. The Lake Tanganyika
 - D. The Lake Victoria

- ix. The International Astronomical Union (I.A.U) denoted Pluto as a dwarf planet in
 - A. 1930
 - B. 2000
 - C. 2003
 - D. 2006

- x. The condition at the atmosphere where the temperature is cooled and becomes saturated is called
 - A. Focus point
 - B. Dew point
 - C. Saturated point
 - D. Focal point

ANSWERS

i.	ii.	iii.	iv.	v.	vi.	vii.	viii.	ix.	x.

2. Match the items in **COLUMN A** with the responses in **COLUMN B** by writing the letter of the correct answer in the table below.

COLUMN A	COLUMN B
i. Green house gases	a. A place where the Great Rift Valley starts
ii. Mafia	b. Joined Asia and Europe
iii. Panama Isthmus	c. South East and North East
iv. Cardinal points	d. Factor affecting climate
v. Bollide	e. Include droplets, dust and soot
vi. Climate change	f. A very brilliant meteor
vii. Circumnavigation	g. Lies on a continental shelf
viii. Syria	h. Evidence of the earth's flattened shape
ix. Ocean currents	i. Lies on a continental deep
x. The sun	j. North, South, East and West
	k. Forms about 90% of the solar system
	l. The slow changing of the earth's overall climate over a long period of time
	m. Forms about 91.8% of the solar system
	n. Joined North America and South America
	o. Evidence of the earth's spherical shape

ANSWERS

i.	ii.	iii.	iv.	v.	vi.	vii.	viii.	ix.	x.

3. Write **T** if the statement is correct and **F** if the statement is incorrect in the table below.

- i. All satellites in the solar system have the same sizes.
- ii. Rotation and revolution of the Earth occur simultaneously.
- iii. Solar energy efficacy is determined by the weather condition of an area.
- iv. Antarctica is the smallest continent of the world.
- v. Starting point of reading grid reference is south west corner.

- vi. Hail is the combination of snow and rain.
- vii. The total number of days in the leap year is $365\frac{1}{4}$.
- viii. The thermometers are kept within the Stevenson's screen.
- ix. Dairy farming is the rearing of livestock for the production of meat.
- x. Hundreds of comets are noticed from the Earth daily.

ANSWERS

i.	ii.	iii.	iv.	v.	vi.	vii.	viii.	ix.	x.

4. a) Define weather station.

b) Outline two (2) suitable guidelines to establish site for weather station.

i) _____

ii) _____

c) Write down the instruments used to measure the following elements of weather.

ELEMENT	INSTRUMENT
i) Sunshine	
ii) Atmospheric pressure	
iii) Temperature	
iv) Humidity	

5. a) What is eclipse?

b) Give brief explanation on partial lunar eclipse.

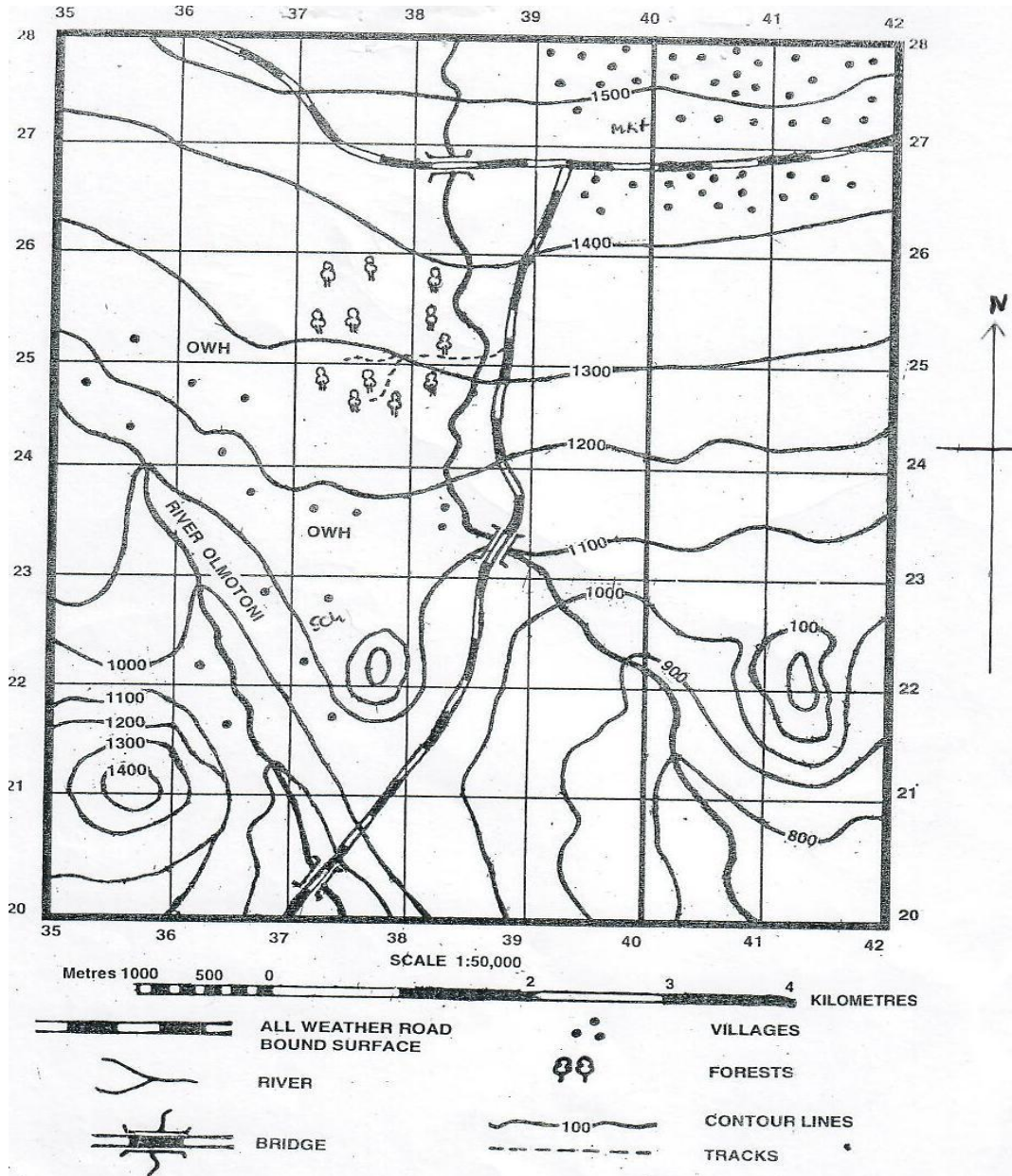
c) Draw a clear diagram of lunar eclipse.

SECTION B: (20 Marks)

MAP - WORK

Answer ALL questions in this section.

6. Study the map carefully and then answer the questions that follow.



a) Identify features found in the following grid references.

- i) 363251 _____
- ii) 360234 _____
- iii) 377248 _____
- iv) 383268 _____

b) Give two (2) signs and two (2) symbols used on the map above.

c) With example from the map, name any two (2) possible human activities that can be carried out.

i) _____

ii) _____

7. a) Define a sketch map.

b) Mention three (3) characteristics of a sketch map.

c) Give one (1) difference between cartography and cartographer.
